

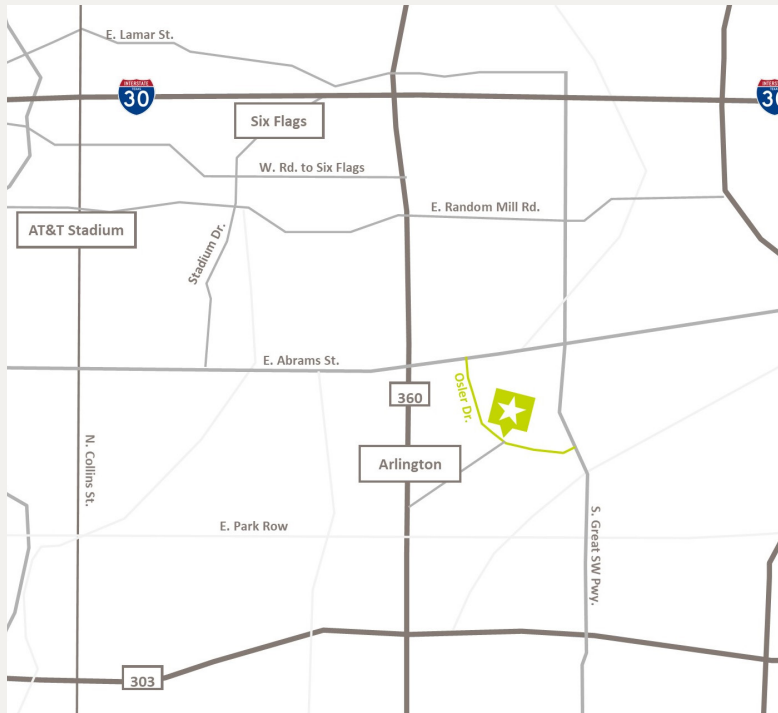
Space for Lease

221 OSLER DRIVE
ARLINGTON, TX 76010



Space for Lease

221 Osler Drive
Arlington, TX 76010



LEASE RATE & STRUCTURE $\$11.50/\text{SF} + \$3.00/\text{SF}$ NNN (Estimated)

PROPERTY FEATURES

- 21,500 SF Building
 - 6,000 SF Minimum Available
 - Additional 4,500 SF Mezzanine can be installed.
- 1.62 Acre Lot
- 37 Parking Spaces
- 4 Grade Level Doors
- 22' 6" Clear Height
- PD Zoning (Flex Warehouse)
- Class A
- Potential for Security Fencing

LOCATION HIGHLIGHTS

Located off the I-30 and 360 interchange at the corner of Osler Drive and W. Jefferson Street. This location provides easy access to the DFW metroplex through arterial highway systems.

Space for Lease

221 Osler Drive
Arlington, TX 76010

